

PLAN OF GUARD RAIL WIDENING, CURBING, SLOPE DRAINS AND SPLASH BASINS

NOTE: SLOPE DRAINS, SPLASH BASINS AND CURBING TO BE LOCATED AS SHOWN ON THE PLAN AND AS DIRECTED BY THE ENGINEER.

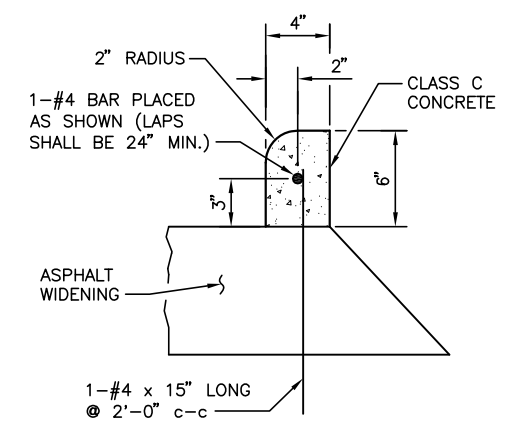
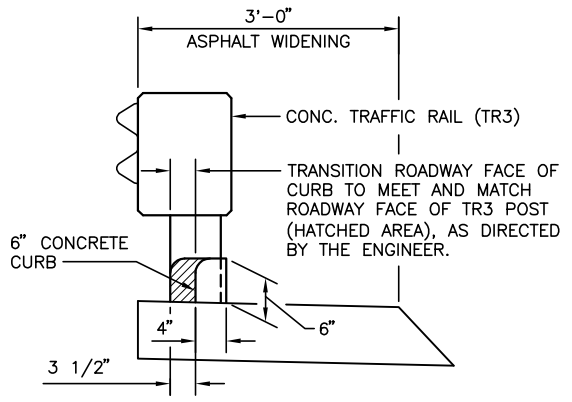
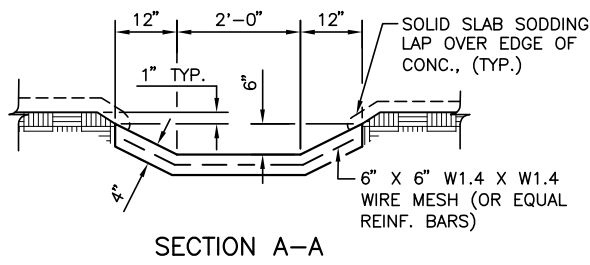
- ① SLOPE TO MATCH SLOPE OF HEADER.
- ② SET THIS POINT AT TOE OF SLOPE.

NOTE (1): BETWEEN EDGE OF ASPHALT SHOULDER AND TOP OF CONCRETE SLOPE DRAIN, CONST. 4" CONCRETE BASE OVER AREA OUTLINED BY CURBING. COST TO BE INCLUDED IN PRICE BID FOR "CLASS C CONCRETE", PER C.Y.

NOTES: ASPHALT SHOULDER WIDENING SHALL BE IN ACCORDANCE WITH THE ROADWAY PLANS AND DETAILS SHOWN ON THIS SHEET. ALL COSTS OF ASPHALT SHOULDER WIDENING SHALL BE INCLUDED IN THE ROADWAY PAY ITEMS.

THE SLOPE DRAINS AND SPLASH BASINS SHALL BE CONSTRUCTED USING CLASS "C" CONCRETE AS SHOWN ON THIS SHEET. ALL COSTS OF THE SLOPE DRAINS AND SPLASH BASINS INCLUDING WIRE MESH, EXCAVATIONS AND BACKFILLING SHALL BE INCLUDED IN THE BRIDGE PAY ITEM FOR "CLASS C CONCRETE".

THE 6" CONCRETE CURBS SHALL BE CONSTRUCTED AS SHOWN ON THIS SHEET. ALL COSTS TO CONSTRUCT THE 6" CONCRETE CURBS INCLUDING CONCRETE AND REINFORCING STEEL SHALL BE INCLUDED IN THE BRIDGE PAY ITEM FOR "CLASS C CONCRETE".



Design	.	S.H. 74D OVER ROCK CREEK	LOGAN COUNTY
Drawn	PKW 09/14	DRAIN AT END BRIDGE DETAILS BRIDGE "A" @ STA. 67+62.00 State Job No. 28312(04)	
Checked	.		
Approved	.		
Squad	.		
		Sheet No. 25	